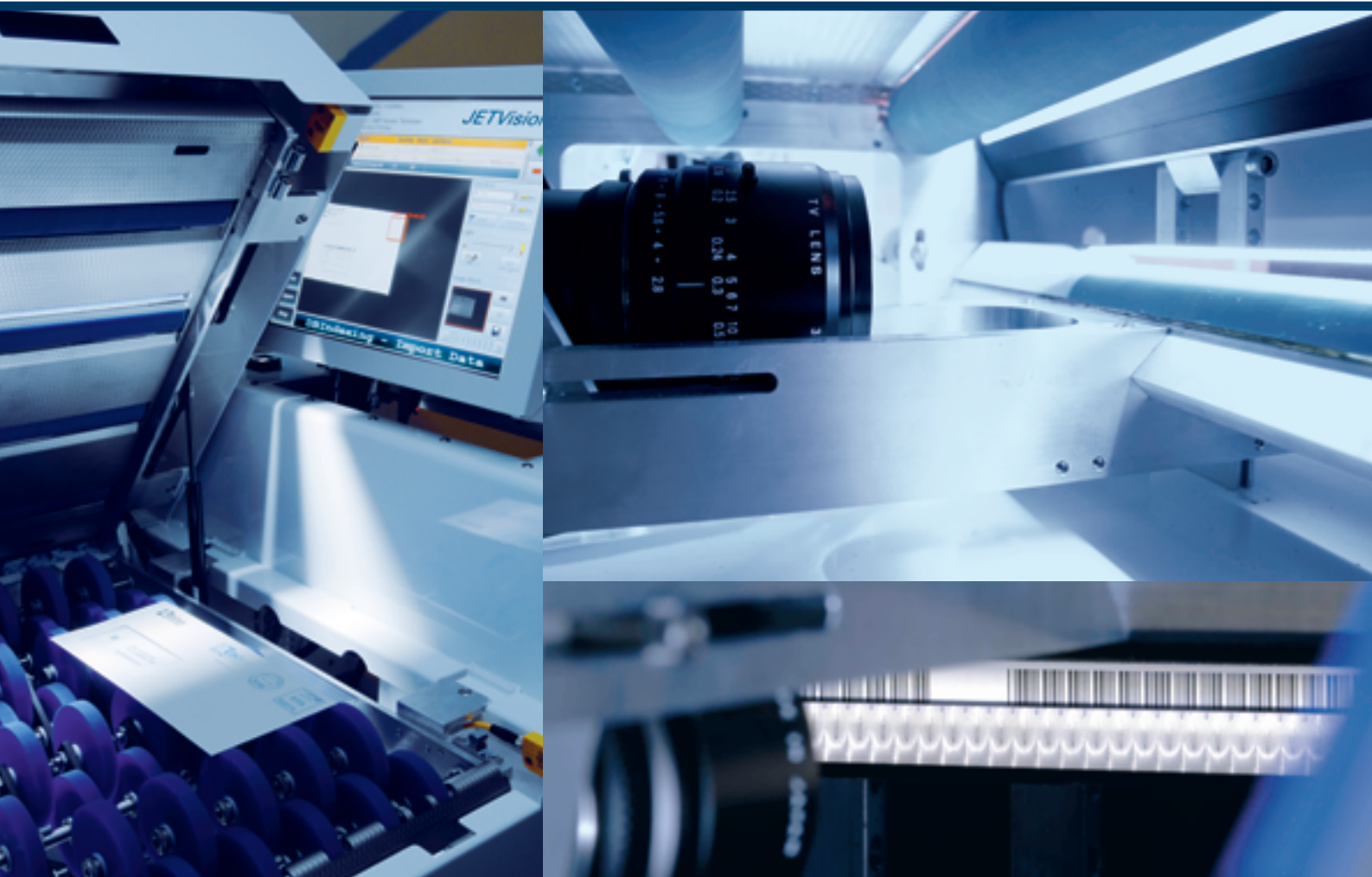


## Independency. Transparency. Retrofit.

Due to both the increase in demand for productivity and security, and more diverse applications in the modern mail-room, the requirements for intelligent reading technologies are also rising. The BÖWE Group transforms these demands into visionary concepts and offers independent reading technologies for all process components of document handling – regardless of the manufacturer. Thus we establish the foundation for consistent document tracking and expanded quality control in the handling process. The result is an increase in the integrity of mailings, assuring highest quality in the mailing process of every mailroom.



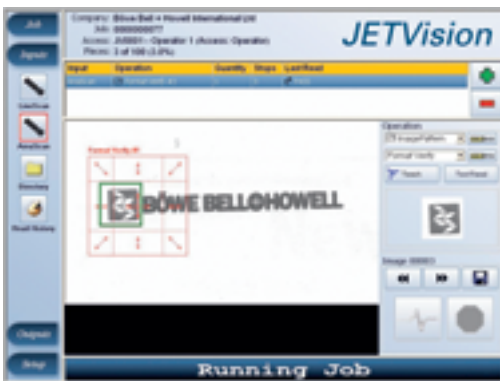
### JETVision camera reading

JETVision can be used with most systems, regardless of the manufacturer, and can easily be installed retrospectively. In this way, the handling integrity of every external system can be assured and/or the complete mailroom can be controlled and monitored centrally through integration in the BÖWE One Software Environment, regardless of whether an internal or external system is in use.

JETVision can read and analyze all established codes (OMR, OCR, barcodes, data matrix, etc.) as well as images such as logos or addresses. There are two reading options available, line scan as well as area scan camera reading, which are used depending on the individual configurations and the technical requirements of the processing systems.

### Essentially, the two reading technologies differ as follows:

In the line scan option, JETVision scans the complete document and can read up to five freely definable scan areas (regions of interest or ROI) on one page, regardless of their alignment to one another. Adjustments can be made quickly, comfortably, and in a user-friendly manner on your own JETVision system monitor, without having to change the position of the camera. This shortens the setup time considerably and consequently increases productivity significantly.



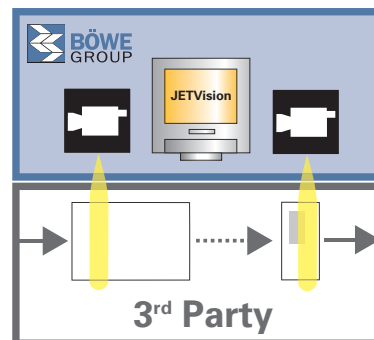
Several codes and symbols of different types can be read simultaneously. Reading from the top or from the bottom is generally possible.

The area scan camera is used when either only one ROI is necessary or when technical limitations make the use of a line scan camera impossible. By positioning the camera in the enclosure feeder, it can be used as an intelligent feeding channel with all the features of the JETVision reading technology.

### Increase in integrity and quality

JETVision makes additional quality assurance at the end of the inserting process possible. Thus, you can ensure, for example, that the address is complete and legible in the window of the envelope.

Similarly, JETVision checks the readability of the stamp or the existence and the correct positioning of the logo printing on the envelope. As an integrity check, the



documents' sequence numbers, for example, can be read in the envelope's window. Furthermore, images of the checked envelopes can be saved in a database and used for monitoring purposes at a later date.

### Traceability and automation in the mailroom

Like all reading technologies in the BÖWE Group, JETVision is fully integrable in the BÖWE One Software Environment. The processing of the read documents and their sending out can be – regardless of the manufacturer of the system – accurately logged and therefore made traceable. In this way, JETVision contributes decisively to more transparency and security in the modern mailroom.

## JETVision

- Verification of handling quality
  - Monitoring of processing security
  - Flexible in use by easy upgrading concept
  - Easy integration of external systems in BÖWE One
- ➔ **More efficiency, quality, integrity and transparency in existing mailrooms**

# JETVision

## Increase job integrity and quality with industry-leading vision technologies

Errors in the production process can seem almost endless. From duplicate pieces, to items with missing information or poor quality, there are many challenges that can cost hundreds of thousands of dollars in wasted time, materials and potential penalties from missed deadlines. While manual quality checks can help alleviate this problem, they are time consuming and subject to error.

You need technology that will quickly confirm that items are error-free and meet postal and regulatory requirements. BÖWE Group's JETVision™ systems provide the most comprehensive selection of machine vision modules ranging from simple operations to very complex integrity and quality-control systems. These modules use superior symbol recognition technology to read one- and two-dimensional barcodes, as well as image patterns and font-independent OCR symbologies. JETVision can also test mailpieces to ensure that they comply with the latest USPS® requirements. In addition, JETVision operations can share data and job information with other ADF management systems such as BÖWE Group's BÖWE One® software suite.

### Flexible configurations

The JETVision product family has been designed with many flexible configurations to meet a variety of budgets and application needs.

JETVision Express has a universal mounting kit. The kit includes generic



JETVision Express

standard mounting brackets for installation on printers, insert-channel reading or input-feeder reading on legacy and third-party equipment.

The JETVision Platinum Envelope Transport is designed with an envelope transport for letters, 6 x 9 and flats envelopes. It can also be used on legacy or third party systems, for reading at the back-end of an inserter, or in a manual operations department.



JETVision Platinum

New versions of the JETVision family are always under development to meet the industry's changing application needs.

### Implementation

#### JETVision is compatible with:

- System and non-system inserters (both BÖWE Group and competitive inserters)
- Folders
- Printers
- Collators
- Roll systems
- Inkjet systems
- Labelers
- Binding equipment
- Cutters
- Bursters, and more

## JETVision operations

JETVision can be configured with one or many of the following packages:

### Verification package

- > **Ensure an address has not been masked**—The Address Verify operation confirms that all mailpieces have a visible address, eliminating the mailing of non-addressed documents
- > **Identify out-of-sequence jobs**—The Sequence Verify operation alerts an operator that a job is out of sequence, enabling the operator to locate items that are missing, out of order or incorrectly assembled
- > **Confirm that items use the correct base material stock**—The Format Verify operation alerts the operator if the materials used do not match the defined stock for a job, preventing work from having to be redone or a customer from receiving wrong information

### Postal package

- > **Identify mailing breaks by applying visible marks to mailpieces**—The system reads a pre-printed symbol on an envelope and then activates an envelope marker to mark the outside of an envelope with the Postal Break operation. This mark can indicate a postal code break or represent a break in material that requires special handling by the operator
- > **Verify a meter mark or stamp has been applied to your envelope**—Using the Postage Verify operation, an operator can verify the presence or absence of meter imprints

- > **Verify postal barcodes, including Intelligent Mail® barcodes (IMB)**—Using Postal Verification an operator can ensure that the piece will pass postal standards

### Read and print control package

- > **Print a personalized message**—Using information read on the control item the Read and Print operation provides the interface to many different printer modules like Printegrity™, Scitex, Buskro and others

### Database package

- > **Eliminate all control marks and provide machine control**—The Database Sequence operation, in conjunction with Database Indexing, allows unique information to be read from an item and uses the information to automatically retrieve instructions from a database on how to process each item

### Matching package

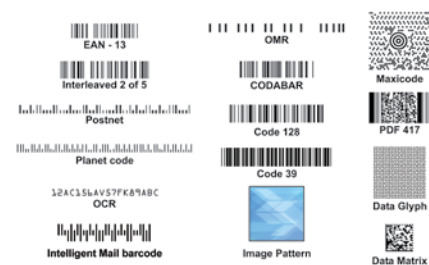
- > **Read and match multiple pieces of information to verify every item is assembled with full integrity**—As data is read at the primary position, the Matching operation uses it to compare and validate that multiple pieces of data read on a single item or information read in multiple locations matches. If the match is not valid, the system is instructed to fault and stop for the operator to take corrective action, or the item can be diverted later in the process with a complete audit trail.

### Image output package

- > **Provide images**—The Image Output operation provides images for storage solutions

## Base services (standard)

- > **Quality assurance reports**—JETVision provides users with real-time statistics that are viewable either on-screen or using a Web-based reporting utility. Users can also instantly print quality assurance reports that identify every item the system has seen, and more importantly, every item it has not seen
- > **BÖWE One enabled**—Secure connection to BOWE One for centralized management and reporting of job, system and operator information. Collect data from any system from any vendor
- > **Support for all industry standard symbologies**—JETVision reads common 1D, 2D and Postal barcodes, as well as OCR fonts



© 2006-2008 BÖWE BELL + HOWELL Company. All rights reserved. BÖWE BELL + HOWELL and the BÖWE BELL + HOWELL logo are trademarks or registered trademarks of BBH Inc. The BÖWE Group logo is a trademark or registered trademark of BÖWE SYSTEC AG. JETVision, BÖWE One, and Printegrity are trademarks or registered trademarks of BÖWE BELL + HOWELL Company. Intelligent Mail and USPS are trademarks or registered trademarks of the United States Postal Service. All other trademarks and service marks are the property of their respective owners. Specifications are subject to change without notice.



Comercializadora de Equipos Sistemas y Servicios, S.A. de C.V.  
Ámsterdam 115 Piso 8  
Col. Hipódromo Condesa  
06170 México D.F.  
Tel: +52(55) 5286-4122  
www.cess.com.mx